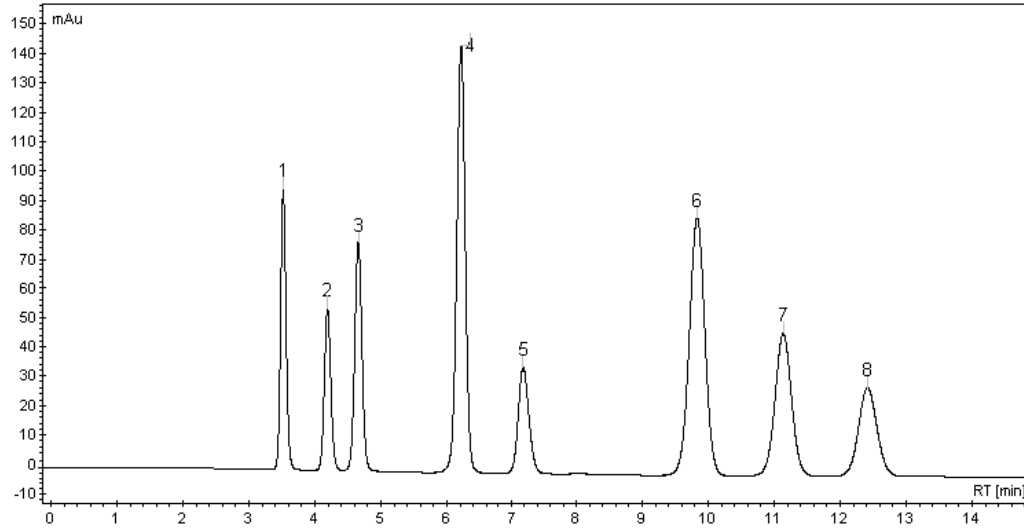


Zodiac C8 液相色谱柱分离 抗组胺药的应用

Column: Zodiac C8
Dimensions: 150 x 4.6 mm, 5 μ m
Mobile Phase: CH₃OH:5 mM NH₄HCO₃, pH10 - 75:25
Flow Rate: 1.0 ml/min
Temperature: Ambient
Detection: 254 nm



Sample: 1. Pheniramine
2. Doxylamine
3. Pyrilamine
4. Phentothiazine
5. Diphenhydramine
6. Loratadine
7. Promethazine
8. Chlorcyclizine

化合物名称：吩噻嗪、苯海拉明 HCl、苯妥英钠、强力霉素、硫胺素、氯雷他定、异丙嗪、氯赛嗪